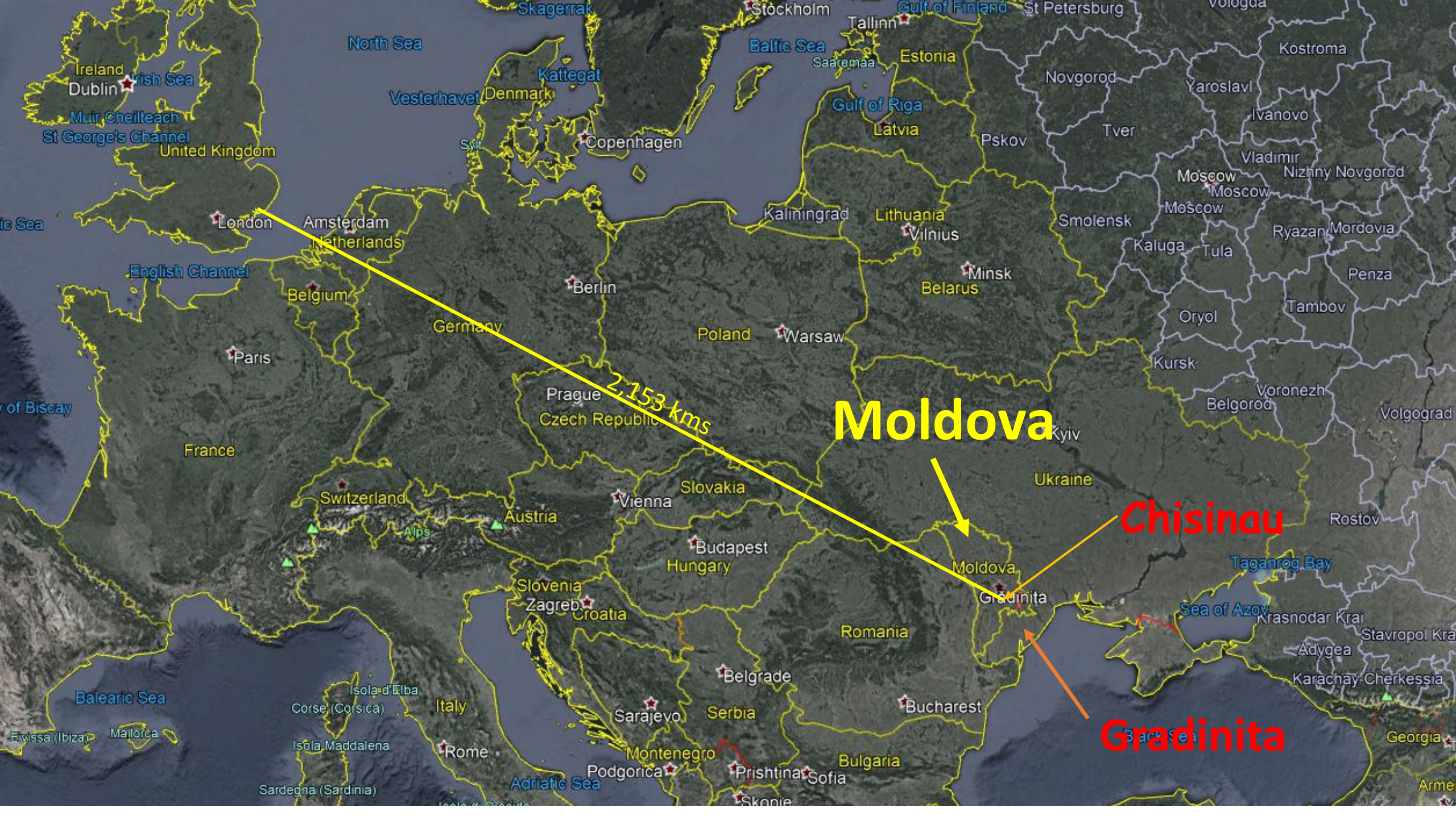


The background features the Rotary International logo, which is a large yellow gear with a white outline. The gear has a central circle and is surrounded by a white ring containing the word "ROTARY" at the top and "INTERNATIONAL" at the bottom. The text of the project title is overlaid on the gear.

**School Toilets
and
Washroom Project
Grădinița, Moldova**

Where?



Moldova

Chisinau

Gradinita

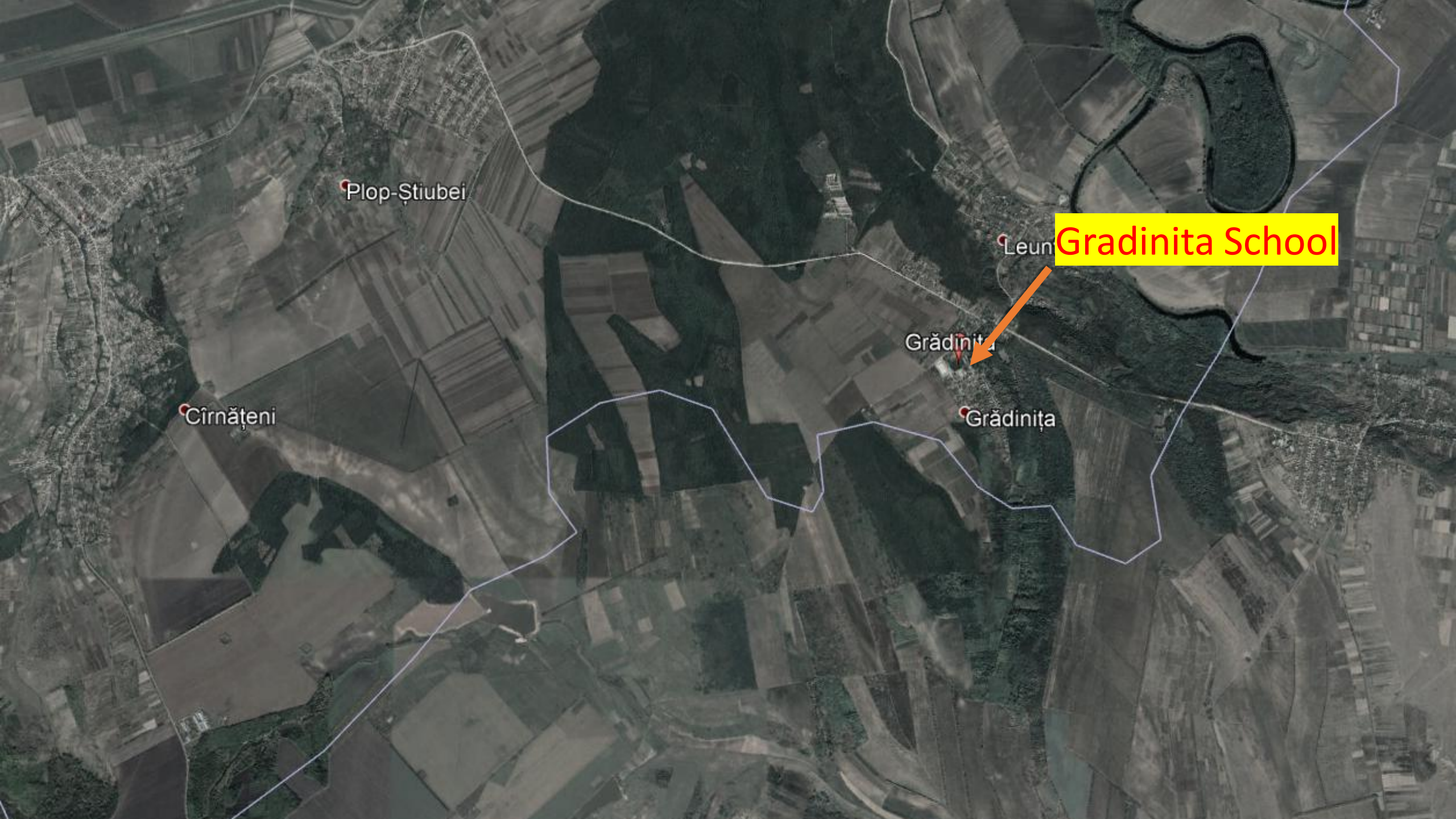
2,153 kms



Chisinau

Gradinita

64 kms



Plop-Știubei

Cîrnățeni

Leun

Grădinița

Grădinița

Gradinita School



Why?

MOLDOVA IS THE POOREST COUNTRY IN EUROPE

Lower Middle Income Country

Per Capita GDP US\$ 3,395

Compared with

South Africa US\$ 6,001

Eswatini US\$ 3,895;

Romania US\$ 12,920 or

UK US\$ 42,330

34 PERCENT OF THE POPULATION SURVIVE ON
LESS THAN £1.45 A DAY.

MAJORITY OF RURAL POPULATION ARE
SUBSISTENCE FARMERS

MAJORITY OF RURAL SCHOOLS HAVE AT
BEST REALLY BASIC SANITATION

POOR INFRASTRUCTURE



The morning school run in winter!!

**POOR QUALITY
HOUSING**



**POOR WATER SUPPLY AND
POOR WATER QUALITY**



What?

A photograph of a small, white, single-story building with a red tiled roof. The building is situated in a snowy environment. The walls are white and show some signs of wear, including a red letter 'M' painted on the wall. A dark doorway is visible on the right side of the building. The ground is covered in snow, and there are some patches of grass visible. The sky is clear and blue. The overall scene is bright and sunny, with shadows cast on the snow.

**SCHOOL TOILETS AT
GRADINITA**

**BOYS TOILETS
AT GRADINITA**





GIRLS TOILETS
AT GRADINITA

TYPICAL POST-PROJECT BOYS TOILETS



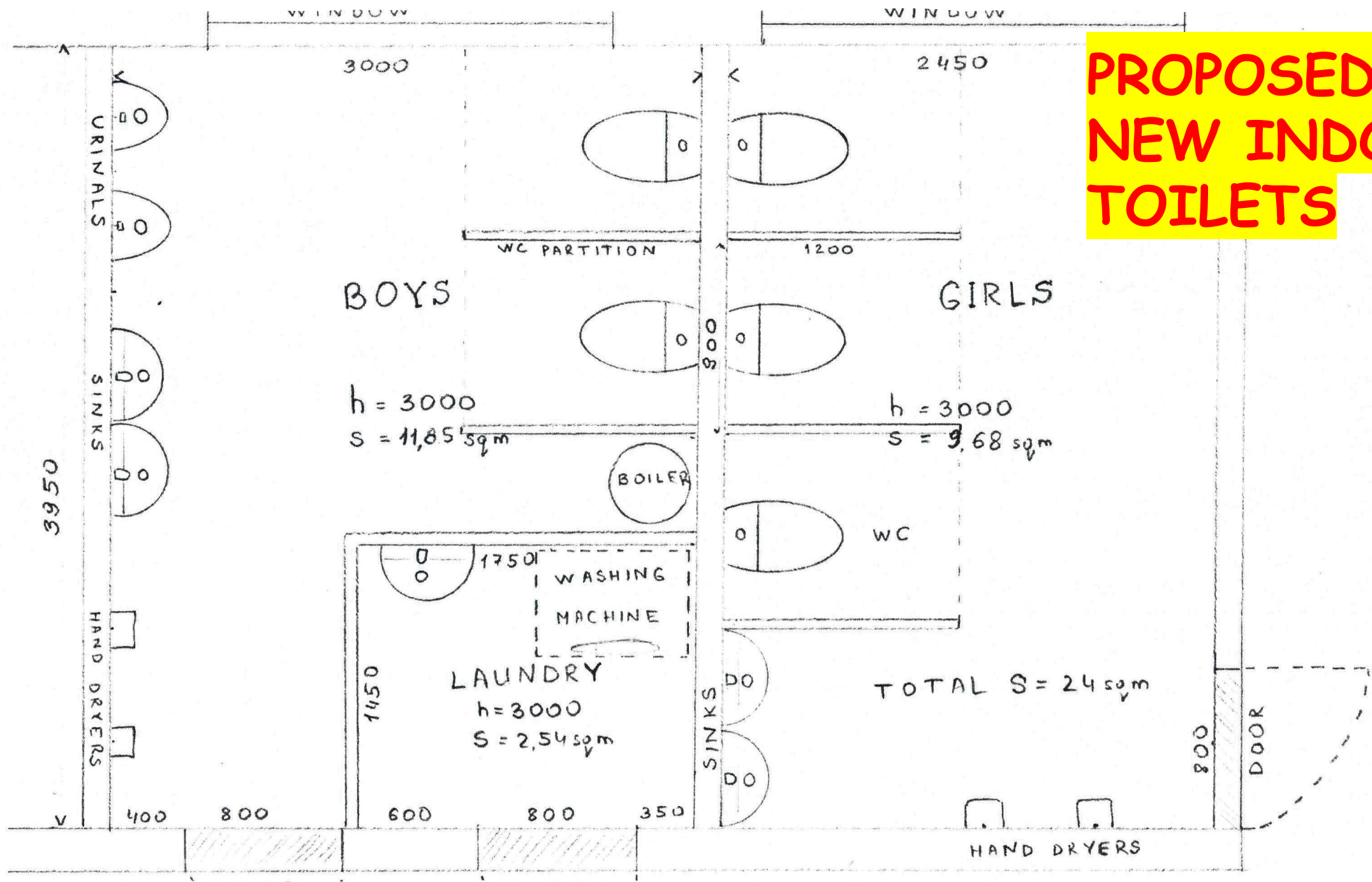
TYPICAL POST-PROJECT GIRLS TOILETS



How?

- Local labour and local suppliers
- Local authorities to instal septic tank and provide mains water
- Supervised by Romeo Cucireav - who installed washroom and toilets at in Baccealia School 2020
- Expect to involve Chisinau Rotary Club in oversight
- Billericay Mayflower Rotary Club main sponsor manage finances and will be responsible for stewardship

**PROPOSED
NEW INDOOR
TOILETS**



Gradinita School - Washroom and Toilets Estimated Costs

| Description | Cost (MDL) | Approx UK£ |
|-------------------------------------|----------------|--------------|
| Floor | 13,051 | 535 |
| Walls | 7,000 | 287 |
| Water Supply | 5,539 | 227 |
| Sewerage | 2,276 | 93 |
| Electricity | 3,855 | 158 |
| Sanitary fittings | 50,330 | 2,064 |
| Labour | 39,000 | 1,599 |
| Electrician | 3,000 | 123 |
| Transport | 8,000 | 328 |
| Total | 132,051 | 5,414 |
| 5% currency fluctuation contingency | | 271 |
| 10% physical contingency | | 541 |
| Grand total | | 6,226 |

Contacts:

Barry Howe - President,
Billericay Mayflower Rotary Club
barrymhowe@yahoo.co.uk

Ian Rossiter - Chair, International and Foundation
Ipswich Rotary Club
rossiter718@btinternet.com